

# IP Registry Integration

- hassle free IP address updating for access authentication



**theIPRegistry.org**

**TheIPRegistry.org is the only registry that checks and verifies IP updates to eliminate the errors that commonly occur**

developed by



# About IP Authentication

IP address authentication is an easy way to seamlessly authenticate users requesting access to a publisher's content. Subscribers are given access based on their organisation's IP address(es), eliminating the need for user IDs and passwords. As well as being quick and easy, this method of authentication has the additional benefit of preserving user privacy.

The data needs updating frequently, and a lot of work is involved in communicating these updates to the many different publishers, vendors and platforms that use this information. It is extremely easy to introduce typos in the long strings of an IP number when manually updating this information.

*TheIPRegistry.org* allows subscribers to update multiple content vendors simultaneously, while also checking and verify the data by cross checking and collecting evidence



# Benefits for Publishers

- theIPregistry.org already contains over 1.5 billion verified IP addresses
- All new IPs are fully vetted and verified before dissemination to publishers
- IP changes can be pushed out to publisher systems automatically via API - this prevents the introduction of errors due to manual entry
- Integration of theIPregistry.org into publisher systems saves staff time and costs



*TheIPregistry.org is the only registry that checks and verifies IP addresses to eliminate the errors that commonly occur*

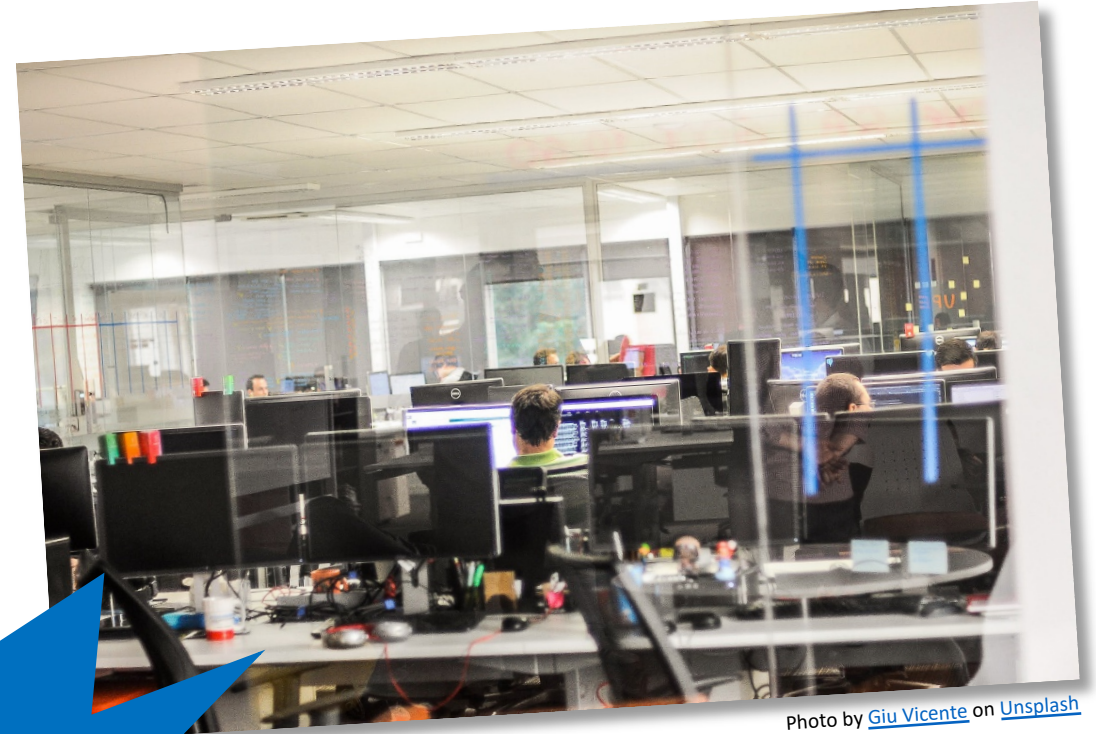


Photo by [Giu Vicente](#) on [Unsplash](#)



# Benefits for Libraries

- Libraries can check the IPs that publishers use to provide access and attribute usage – the data in the registry was supplied by over 150 publishers so provides a valuable snapshot of how access is provided
- Dissemination of IP updates to multiple publishers at the click of a button
- Integration of theIPRegistry.org into library workflows saves staff time and costs



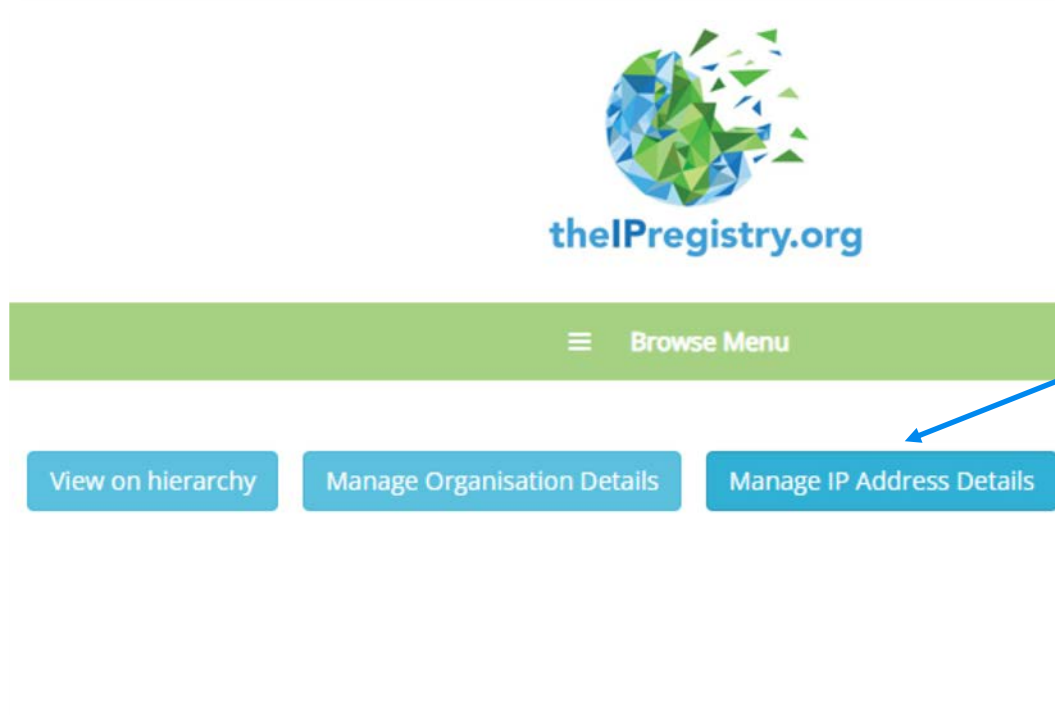
Photo by [Geraldine Lewa](#) on [Unsplash](#)



*There are now over  
14,500\* organisations  
using theIPRegistry.org to  
communicate IP updates to  
publishers*



# TheIPRegistry.org: Add Proxy IP



To select proxy status for an IP address or range:

- 1) Select “Manage IP Address Details” from the menu.

**Please note:** when the proxy IP sits in the middle of an already active range, it can be more difficult to ensure that everything is listed correctly in theIPRegistry.org. In this situation, please email the team at [admin@theIPRegistry.org](mailto:admin@theIPRegistry.org) to let them know which IP address should be showing as the proxy IP, and they will make the changes for you.



# TheIPRegistry.org: Add New Proxy IP

**1a) To add a new proxy IP address click on the “Add” button.**

**1b) The Add IP  
dialogue box will  
appear.**

**1c) Add your IP in  
your preferred  
format.**

**1d) Make sure you check the tick box to designate this new IP as a proxy IP.**

Browse Menu

For more information or help on how to Manage your IP Address

\*Please note that some publishers are not currently able to accept IPv6 addresses. For these publishers submission many publishers are working towards the acceptance of IPv6 addresses and when they achieve this,

Add

Supporting Documentation

Save Changes

☐

I confirm that, to the best of my knowledge, these are the correct IP addresses for publishers to use to authenticate access to electronic resources.

Green

This is a

Purple

This is a

Amber

This IP address is awaiting verification. If the IP is verified and correct, then please change to Green/Purple, and if the IP is incorrect, then please delete.

GBRCS0ITC662234 - The IP Registry

Start	End	
081.133.140.039	081.133.140.039	<div><div>Status ▾</div><div>Delete</div><div>Comments</div></div>

CIDR

CIDR

Is this a remote/proxy IP address (e.g. the EzProxy or OpenAthens IP)? If so please tick the box and provide details in the comment field. Your IP will be added as Purple

☒

Comments

Close

Add

Add IPV4 or IPV6

# TheIPRegistry.org: Add Proxy status - Existing IP

≡ Browse Menu

For more information or help on how to Manage your IP Addresses, please click [HERE](#)

*\*Please note that some publishers are not currently able to accept IPv6 addresses. For these publishers submission via [theIPRegistry.org](#) will not activate access via these IP addresses. However, many publishers are working towards the acceptance of IPv6 addresses and when they achieve this, the IPs will be readily available to them through our system.*

[Add](#) [Supporting Documentation](#) [Save Changes](#)

☐ I confirm that, to the best of my knowledge, these are the correct IP addresses for publishers to use to authenticate access to electronic resources.

Green This is a verified and correct IP address

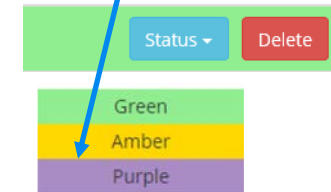
Purple This is a verified and correct IP address, but it is a remote/proxy IP address (e.g the EzProxy or OpenAthens IP).

Amber This IP address is awaiting verification. If the IP is verified and correct, then please change to Green/Purple, and if the IP is incorrect, then please delete.

GBRCS0ITC662234 - The IP Registry

Start	End	
081.133.140.039	081.133.140.039	<a href="#">Status ▾</a> <a href="#">Delete</a> <a href="#">Comments</a>

2) Click on the “Status” button and select “Purple”. Proxy IPs are identified by selecting the purple status. This allows us to provide information to publishers and service providers helping them to avoid blocking these IPs due to unexpected behaviours. ...



≡ Browse Menu

Organisation IP Address Comments

[Back](#) [Add Comment](#)

Date Created	Comments	
15/10/2020 16:19:34	This is an EzProxy IP for the University of Liverpool	<a href="#">Edit</a> <a href="#">Delete</a>

3) Add detail by clicking on the “Comments” button.

4) Click on “Add Comment” – e.g. This is the LOCKSS IP.